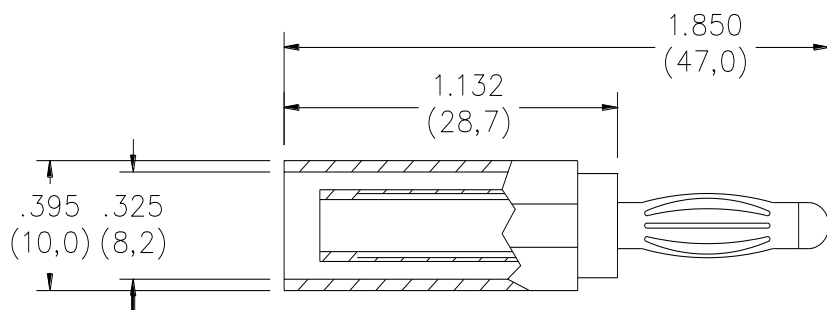


**Model 6728****Adapter, Standard Sheath Banana Jack to Non-Sheath Banana Plug****Features**

- Adapter provides an easy and quick conversion from a standard sheathed banana plug / patch cord to a standard exposed banana plug.
- Allows standard sheathed banana plugs / patch cords to connect to non-sheath style banana jacks or binding posts.
- Ideal for environments using a mixture of sheathed and non-sheathed style patch cords.

**Materials**

Banana Jack:	Nickel Plated Brass
Banana Plug:	Nickel Plated Beryllium Copper
Insulation:	Nylon 6

**Ratings**

Voltage:	For <i>CE compliance</i> and for personal safety, do not hold in hand when voltages exceed 30 Vac / 60 Vdc. Maximum voltage for <i>hands free</i> use in controlled testing environments: 600 Vrms Do not use on circuits where transient stresses can exceed the rated voltage.
Current:	20 A max
Temperature:	-10°C to +55°C

**Ordering Information**

Model: 6728-\*, 4MM SAFETY BANANA JACK TO BANANA PLUG ADAPTER

\* = color

6728-0	Black
6728-2	Red

USA: Technical Support: [technicalsupport@pomonatest.com](mailto:technicalsupport@pomonatest.com)

Europe: 31-(0) 40 2675 150 International: 425-446-5500

Where to Buy: [www.pomonaelectronics.com](http://www.pomonaelectronics.com)

All dimensions are in inches. Tolerances (except noted): .xx = ±.02" (.51 mm), .xxx = ±.005" (.127 mm). All specifications are to the latest revisions. Specifications are subject to change without notice. Registered trademarks are the property of their respective companies.